

DATA SHEET

ARUBA CENTRAL

Unified Cloud-Native Network Operations,
Security and Assurance

Aruba Central is designed to simplify the deployment, management and optimization of WLAN, LAN, VPN and SD-WAN. The use of integrated AI-based machine learning, IoT device profiling for security and unified infrastructure management enhances traditional management for today's intelligent edge.

Streamlined workflows, centralized monitoring and control, built-in AIOps, detailed alerts, reporting and troubleshooting combine to save time and resources. IT can spend less time on managing the infrastructure and more on creating value for the business.

STREAMLINED NETWORK OPERATIONS

It all begins with the interface, which is informative and easy to use. Aruba Central provides quick and easy access to the data required to manage, analyze and maintain your networks, devices and clients from a single pane of glass. This saves time and reduces the learning curve while improving how your network performs.

Onboarding of network devices is a key activity in any environment, but can be time consuming and complex. Aruba Central simplifies IT operations with an easy setup wizard, Zero Touch Provisioning, and an integrated installer app.

The setup wizard automatically adds account subscriptions, synchronizes device inventory from orders, and assigns subscriptions to devices. This saves time, improves accuracy, and makes it easier to onboard devices into your environment.

Zero-Touch Provisioning (ZTP)

Zero Touch Provisioning (ZTP) gets new infrastructure devices up and running. Configuration parameters are centrally defined for Aruba access points (Instant or Micro-branch), switches, VPN users and gateways, and are automatically downloaded as device boot up. Each device connects to Aruba Central and automatically receives its running configuration, regardless of location.

KEY FEATURES

- Streamlined context-aware navigation
- Simplified operational workflows
- Centralized management and control
- Advanced analytics and assurance
- Intelligent mobile and IoT device security
- Unified WLAN, LAN, VPN and SD-WAN services
- Advanced IPS/IDS threat defense management

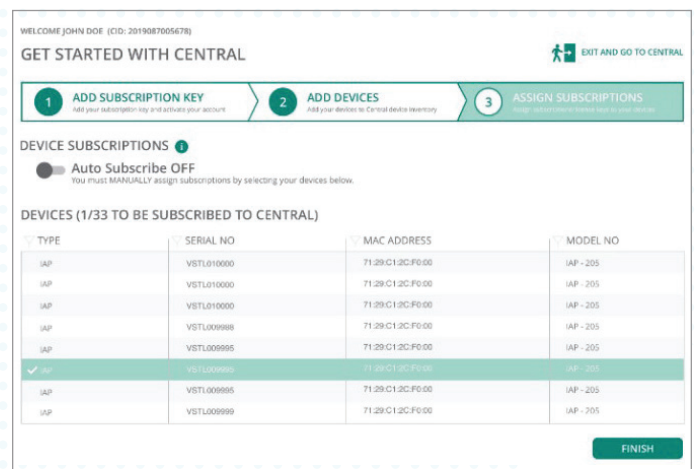


Figure 1: Setup wizard for simplified onboarding

The integrated installer app allows you to delegate the installation and deployment of devices to a trusted resource or third-party service provider. The app lets you define the access privileges of an installer and track the onboarding process as devices are scanned and added to the assigned network. The ZTP process is then used, and the status of devices is instantly updated in the Central installer dashboard.



UNIFIED INFRASTRUCTURE MANAGEMENT

The first thing you'll notice is the network health overview. This primary dashboard provides a global or site view of all managed devices. A detailed list of device usage, utilization and RF noise, along with WAN up link and tunnel status can be easily viewed.

At-a-glance views provide comprehensive visibility and control at the global level. Selecting a site changes the interface to only show those devices relevant for specific sites. The same is true for clients at each site.

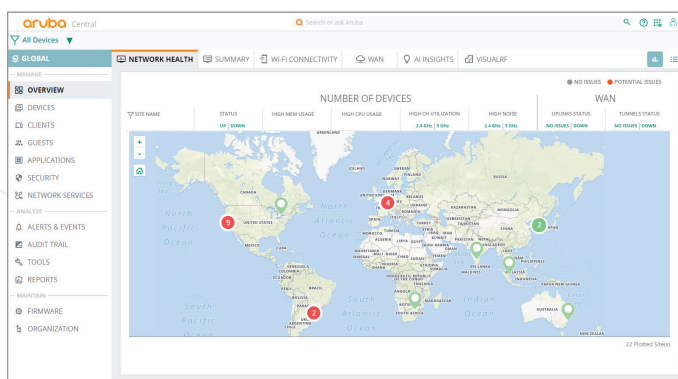


Figure 2: Network Summary

ADVANCED AIOps

With continuous monitoring, AI-based insights provide real-time visibility and alerts into what's happening in the wired and wireless LAN. The insights leverage a growing pool of network data, and deep domain experience.

When a problem occurs, quick identification, characterization and resolution are at the core of maintaining a stable environment. Here again, Aruba Central's AI Insights deliver the right context-based information at the right time, thus providing a more efficient alternative to event or command line based troubleshooting. However, detailed events and integrated command line tools are available when needed.

The result is a consistent, reliable and timely flow of information about the RF environment that helps IT work smarter despite increasing demands and the complexity that a growing network often brings.

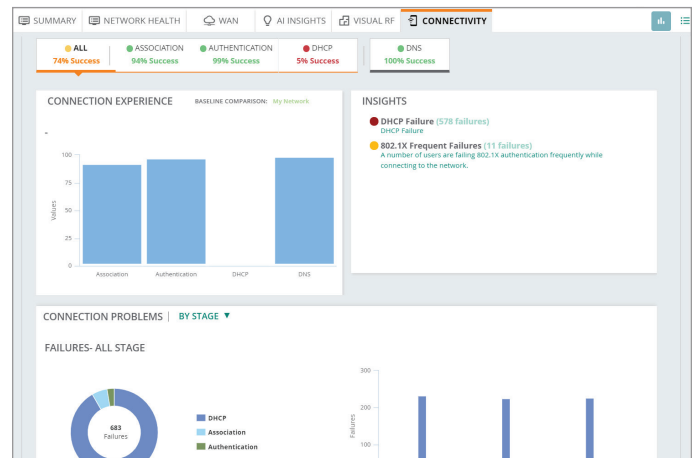


Figure 3: AI-based connectivity insights

REPORTING AND IN-DEPTH TROUBLESHOOTING

Aruba Central includes the ability to create comprehensive reports that cover device connectivity, network health and user account activity. A reporting wizard is also provided to generate scheduled and on-demand reports that highlight network and application health, throughput and usage data, device and client inventory and activity auditing.

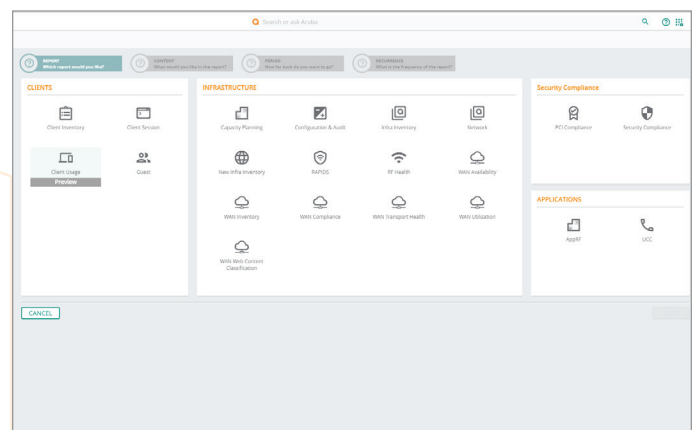


Figure 4: Reporting Wizard

REMOTE TELEWORKER SERVICES

Aruba Central manages secure overlay VPN tunnels from APs and VIA VPN clients to SD-WAN Gateways deployed in data centers or public cloud infrastructure. This enables IT to easily scale network infrastructure to support thousands of remote users who need access to corporate applications and services. For existing customers with APs running Aruba Instant or APs with IAP-VPN connections, it's easy to convert to an Aruba Central-managed VPN platform.



SD-WAN ORCHESTRATION AND MANAGEMENT

The monitoring and control of SD-WAN virtual, headend and branch gateways allows IT to centrally manage the infrastructure and routing of traffic over MPLS, broadband and cellular links. Aruba Central also provides:

- Integrated topology views for graphical representation of gateways and details per site
- Application performance scores for WAN circuit health, bandwidth availability and tunnel status for each site
- WAN orchestration for the management of routing preferences across branch locations and data centers
- Virtual Gateway management to directly extend policies to the public cloud hosted gateways
- VPN services for remote APs (IAP-VPN) and VIA client users

Workflows also exist that allow IT to look into specific device, policy or circuit configuration information to improve the user experience.

Threat Defense with IPS/IDS

To improve security against a growing attack surface, gateways deployed in SD-WAN mode add role and identity-based intrusion detection and prevention (IDS/IPS) capabilities on top of existing security features. Advanced Aruba Central security dashboard provides IT Teams with network-wide visibility, multi-dimensional threat metrics, threat intelligence data, correlation and incident management. This feature requires an Aruba Central Threat Defense subscription license.

AUTOMATED MOBILE AND IOT DEVICE SECURITY

To facilitate the deployment of mobile and Internet of Things (IoT) devices, Aruba Central can directly display information gathered from Aruba ClearPass Device Insight, which offers AI/ML based profiling. Device Insight automatically categorizes all devices on any wired or wireless network.

The use of packet inspection also allows Aruba Central to create behavioral profiles for the devices connected to the network. IT can use Aruba Central to see specific traffic patterns for any device to ensure that a device is actually what it is displayed as.

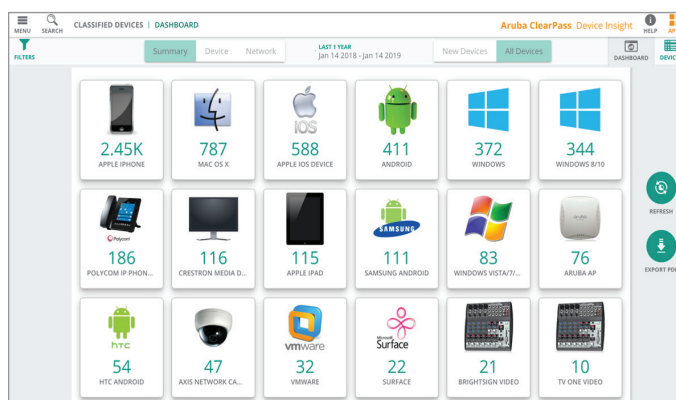


Figure 5: Mobile & IoT device visibility for accurate policy use

A MICROSERVICES APPROACH

Agility in the software world is the difference between waiting for months versus days for a new feature or fix. Aruba Central is designed to deliver fault tolerance and flexibility so that new services can easily be added without effecting core functionality.

The flexibility also extends to Aruba's ability to offer a cloud-like experience via an on-premises option if desired.

CLOUD SECURITY AND RELIABILITY

Designed from the ground up, Aruba Central ensures the highest possible availability through:

- A web-scale database design for responsive performance, even when working with large amounts of data
- Service redundancy, hosted from data centers worldwide in multiple locations
- Secure HTTPS connectivity, with certificate-based authentication for the highest level of protection

FLEXIBLE PRICING AND SUPPORT

A predictable, As-A-Service model makes it easy to build the right solution for every business and budgetary need.

This includes:

- Device subscriptions for base management, and services subscriptions for value added guest Wi-Fi and user analytics
- Ability to utilize subscriptions across devices and services
- Online and phone support for any technical issue



ORDERING INFORMATION	
Part Number	Description
Device Management Subscription	
JY925AAE	Aruba Central Device Management Subscription for 1 Year
JY926AAE	Aruba Central Device Management Subscription for 3 Years
JY927AAE	Aruba Central Device Management Subscription for 5 Years
Services Subscription	
JY928AAE	Aruba Central Services Management Subscription for 1 Year
JY929AAE	Aruba Central Services Management Subscription for 3 Years
JY930AAE	Aruba Central Services Management Subscription for 5 Years
Refer to the following portfolio pages for additional information on Aruba Access Points, Switches and SD-WAN networking solutions	
Access Points: https://www.arubanetworks.com/products/networking/access-points/	
Switches: https://www.arubanetworks.com/products/networking/switches/	
SD-WAN: https://www.arubanetworks.com/products/networking/gateways-and-controllers/	

Note: Aruba Central Managed (CM) SKUs are available to simplify ordering within the U.S. and Canada. Refer to the Wireless Access Point and Switch Data Sheets for more information.